

Technical sheet :

# ATJ 46

---



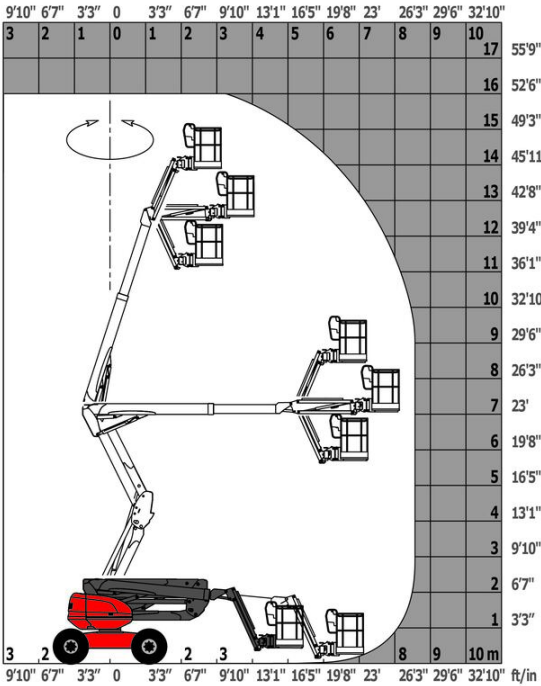
 **MANITOU**  
HANDLING YOUR WORLD

Capacities		Imperial
Working height	h21	52 ft 6 in
Floor height (access)	h20	1 ft 4 in
Platform height	h7	46 ft
Max. outreach		27 ft 3 in
Overhang		24 ft 7 in
Pendular arm rotation (top / bottom)		+65 ° / -59.50 °
Platform capacity	Q	500 lb
Turret rotation		350 °
Platform rotation (right / left)		90 ° / 90 °
Number of people (indoor / outdoor)		2 / 2
Weight and dimensions		
Platform weight*		13426 lb
Platform dimensions (length x width)	lp / ep	6 ft 11 in x 2 ft 7 in
Overall length	l1	21 ft 11 in
Overall width	b1	7 ft 7 in
Overall height	h17	7 ft 9 in
Overall length (stowed)	l9	14 ft 9 in
Overall height (stowed)	h18	9 ft 3 in
Counterweight offset (turret at 90°)	a7	9 in
Counterweight Oversize / Reach		9 in
External turning radius	Wa3	17 ft
Ground clearance at centre of wheelbase	m2	1 ft 2 in
Wheelbase	y	7 ft 3 in
Performances		
Drive speed - stowed		3 mph
Drive speed - raised		0.62 mph
Gradeability		45 %
Wheels		
Tires type		Foam-filled
Standard tires		834 x 298 mm
Drive wheels (front / rear)		2 / 2
Steering wheels (front / rear)		2 / 0
Braking wheels (front / rear)		0 / 2
Engine/Battery		
Engine brand / model		Kubota - D1105-E4B
Engine nom		Interim Tier 4, Stage IIIA, Stage V
I.C. Engine power rating / Power		24.80 Hp / 18.50 kW
Miscellaneous		
Ground Pressure		139 PSI
Hydraulic Pressure		4931 PSI
Hydraulic tank capacity		14 US gal
Fuel tank		14 US gal
Noise to environment (LWA)		< 105 dB
Vibration on hands/arms		< 0.50 m/s <sup>2</sup>
Daily consumption **		1 US gal
Standards compliance		
This machine is in compliance with:		ANSI A92.20-2018 CSA B354.6 ICES-002-Issue 6 Standard Canadian EMC

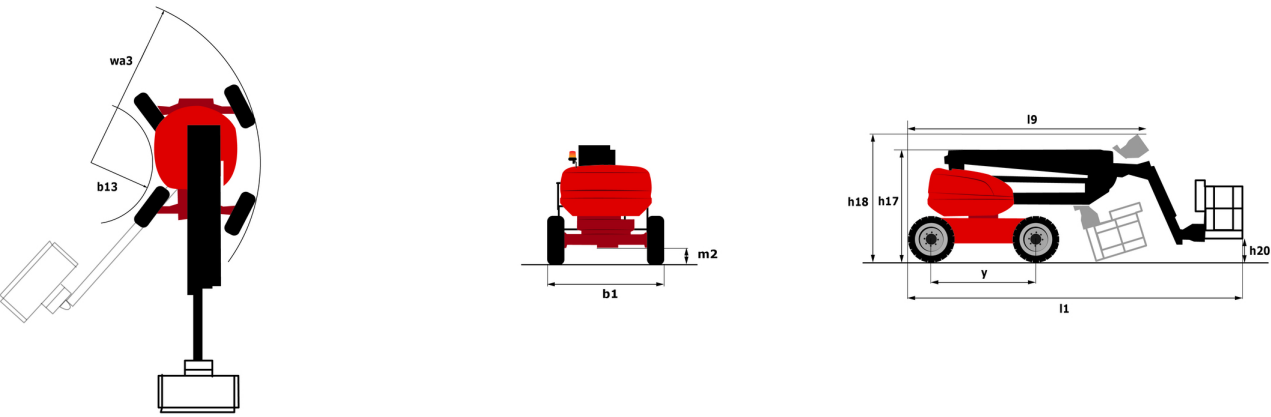
\*Varies according to options and standards of the country to which the machine is delivered

# ATJ 46 - Load chart

## Load Chart for MEWP (Imperial)



# ATJ 46 - Dimensional drawing



# Equipment

---

## Standard

110 V American plug with differential circuit breaker  
4 simultaneous movements  
4 wheel drive  
Audible alarm and illuminated indicator lamp (leveling, overload, lowering)  
Basket 1,800 mm  
Battery cut-off  
CAN bus technology  
Dead man pedal  
Differential locking on rear axle  
Drive safety orientation system  
Easy Manager  
Emergency stop button in platform and on frame  
Flat Led Rotating Beacon  
Front axle with limited slip  
Fuel gauge with low level indicator  
Fully galvanized basket with demountable floor  
Integrated diagnostic assistance  
Lift and drive  
Lockable fuel cap  
Management via engine speed bearing  
Pendular arm  
Proportional controls  
Protective cover for control panel  
Steer and rotate  
Swinging gate on platform  
Water heater

## Optional

Biodegradable oil  
Cold weather kit  
Cold weather protection oil  
Drive safety orientation system  
Foam filled tyres  
Lockable turret cover  
On-board generator (3,5 or 5 kW)  
SMS : Safe Man System  
Water predisposition  
Working light

**Head Office**

B.P. 249 - 430 rue de l'Aubinière

44150 Ancenis Cedex - France

Tel: +33 (0)2 40 09 10 11 - Fax: +33 (0)2 40 09 10 97

[www.manitou.com](http://www.manitou.com)

This publication provides a description of the configuration versions and options for Manitou products, which may differ for equipment. The equipment presented in this brochure may be part of a series, as an option, or it may not be available, depending on the versions. Manitou reserves the right, at any time and without notice, to amend the specifications described and represented. The specifications provided do not bind the manufacturer. For more details, please contact your Manitou agent. This is not a contractually binding document. The presentation of the products is not contractually binding. List of specifications non-exhaustive. The logos as well as the visual identity of the company are owned by Manitou and cannot be used without authorisation. All rights reserved. The photos and diagrams contained in this brochure are only provided for consultation and information purposes.

MANITOU BF SA - Limited company with board of directors - Share capital: 39,668,399 euros - 857 802 508 RCS Nantes