

Ficha técnica :

MLT 625-75 H



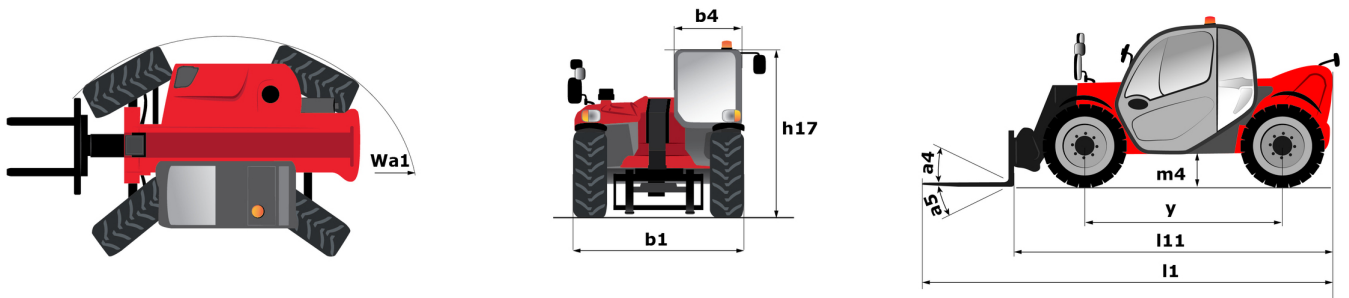
 **MANITOU**
HANDLING YOUR WORLD

| Capacities | | Métrico |
|--|-----|---|
| Max. capacity | Q | 2500 kg |
| Max. lifting height | h3 | 5.90 m |
| Max. outreach | | 3.30 m |
| Reach at max. height | | 0.50 m |
| Breakout force with bucket | | 4205 daN |
| Weight and dimensions | | |
| Unladen weight (with forks) | | 4922 kg |
| Ground clearance | m4 | 0.38 m |
| Wheelbase | y | 2.30 m |
| Overall length to carriage (with hitch) | l11 | 3.90 m |
| Overall length to carriage (without hitch) | l3 | 3.90 m |
| Front overhang | | 0.99 m |
| Overall width | b1 | 1.81 m |
| Overall cab width | b4 | 0.80 m |
| Overall height | h17 | 2 m |
| Tilt-down angle | a5 | 117 ° |
| Tilt-up angle | a4 | 12 ° |
| External turning radius (over tyres) | Wa1 | 3.31 m |
| Standard tires | | Alliance - A580 - 300/75 R18 142A8 |
| Drive wheels (front / rear) | | 2 / 2 |
| Steering wheels (front / rear) | | 2 / 2 |
| Performances | | |
| Lifting | | 7.30 s |
| Lowering | | 4.95 s |
| Extension | | 5.20 s |
| Retraction | | 3.70 s |
| Crowd | | 3.20 s |
| Dump | | 3.20 s |
| Engine | | |
| Engine brand | | Kubota |
| Engine nom | | Stage V |
| Engine model | | V3307-CR-TE5B |
| Number of cylinders - Capacity of cylinders | | 4 - 3331 cm³ |
| I.C. Engine power rating / Power | | 75 Hp / 55.40 kW |
| Max. torque / Engine rotation | | 265 Nm @1400 rpm |
| Drawbar pull (Laden) | | 3240 daN |
| Reversible fan | | Standard |
| Engine cooling system | | 2 radiators water + hydraulic oil |
| Transmission | | |
| Transmission type | | Hydrostatic |
| Number of gears (forward / reverse) | | 2 / 2 |
| Max. travel speed (may vary according to applicable regulations) | | 25 km/h |
| Differential lock | | Limited slip differential on front axle |
| Parking brake | | Automatic negative parking brake |
| Service brake | | Oil-Immersed multi-discs braking on front axles |
| Hydraulics | | |
| Hydraulic pump type | | Gear pump |
| Hydraulic flow - Pressure | | 86 l/min - 235 bar |
| Tank capacities | | |
| Hydraulic tank capacity | | 115 l |
| Fuel tank | | 63 l |
| Noise and vibration | | |
| Noise at driving position (LpA) tested following NF EN 12053 nom | | 76 dB |
| Noise to environment (LwA) | | 104 dB |
| Vibration on hands/arms | | < 2.50 m/s² |
| Miscellaneous | | |
| Safety cab homologation | | ROPS - FOPS cab (level 1) |
| Controls | | JSM |

Optional tires tab

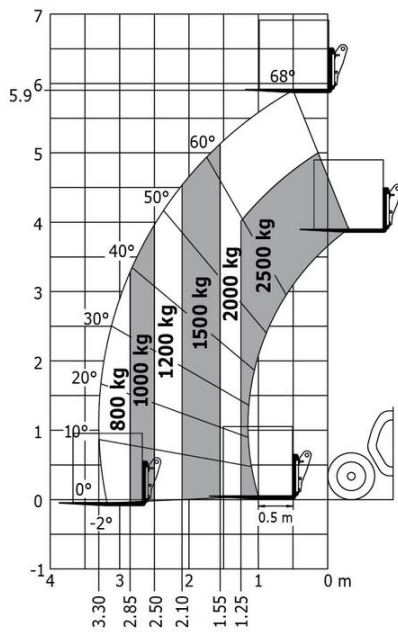
| | Overall height | Overall width |
|--------------------------------------|----------------|---------------|
| ALLIANCE - A328 - 400/55 R17.5 149A8 | 2.01 m | 1.92 m |
| BKT - AS504 - 15/55-17 122A8 | 1.99 m | 1.93 m |
| MICHELIN - XMCL - 280/80 R18 132A8 | 2.01 m | 1.82 m |
| MICHELIN - XMCL - 280/80 R20 133A8 | 2.03 m | 1.79 m |

MLT 625-75 H - Diagrama dimensional



MLT 625-75 H - Diagramas de carga

Machine on tires with forks Metric





 **MANITOU**
HANDLING YOUR WORLD

Oficina Central

B.P. 249 - 430 rue de l'Aubinière

44150 Ancenis Cedex - Francia

Tel.: 00 33 (0)2 40 09 10 11 - Fax: 00 33 (0)2 40 09 10 97

www.manitou.com



Esta publicación describe las versiones y posibilidades de configuración de los productos Manitou que puedan diferir en equipamiento. Los equipamientos presentados en este folleto pueden ser de serie, opcionales o no estar disponibles en algunas versiones. Manitou se reserva el derecho, en cualquier momento y sin previo aviso, de modificar las especificaciones descritas y representadas. Las especificaciones aportadas no comprometen al fabricante. Para más información, póngase en contacto con su concesionario Manitou. Documento no contractual. Presentación de los productos no contractual. Lista de especificaciones no exhaustiva. Los logos y la identidad visual de la empresa son propiedad de Manitou y no pueden ser utilizados sin autorización. Todos los derechos reservados. Las fotos y los esquemas contenidos en este folleto se ofrecen para consulta y a título indicativo solamente.

Manitou BF SA - Sociedad anónima con Consejo de Administración - Capital social: 39 668 399 euros - 857 802 508 RCS Nantes