

Technical sheet :

160 ATJ



 **MANITOU**
HANDLING YOUR WORLD

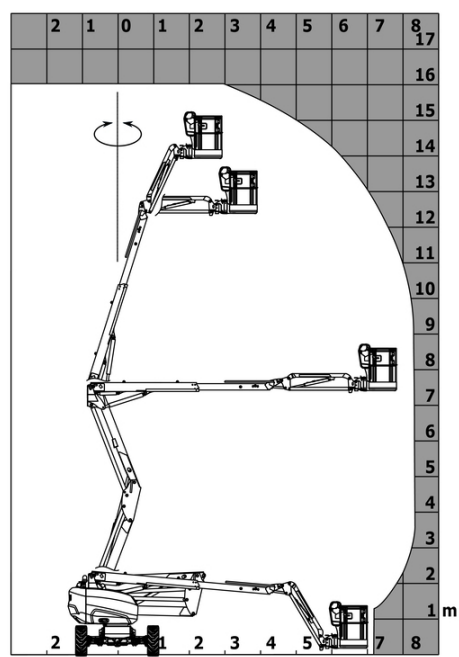
| Capacities | | Metric |
|---|---------|-------------------------------------|
| Working height | h21 | 16.02 m |
| Floor height (access) | h20 | 0.45 m |
| Platform height | h7 | 14.02 m |
| Max. outreach | | 8.30 m |
| Overhang | | 7.50 m |
| Pendular arm rotation (top / bottom) | | +65 ° / -59.50 ° |
| Platform capacity | Q | 230 kg |
| Turret rotation | | 350 ° |
| Platform rotation (right / left) | | 90 ° / 90 ° |
| Number of people (indoor / outdoor) | | 2 / 2 |
| Weight and dimensions | | |
| Platform weight* | | 6160 kg |
| Platform dimensions (length x width) | lp / ep | 1.80 m x 0.80 m |
| Overall length | l1 | 6.68 m |
| Overall width | b1 | 2.32 m |
| Overall height | h17 | 2.37 m |
| Overall length (stowed) | l9 | 4.44 m |
| Overall height (stowed) | h18 | 2.63 m |
| Counterweight offset (turret at 90°) | a7 | 0.22 m |
| Counterweight Oversize / Reach | | 0.22 m |
| External turning radius | Wa3 | 3.75 m |
| Ground clearance at centre of wheelbase | m2 | 0.36 m |
| Wheelbase | y | 2.20 m |
| Performances | | |
| Drive speed - stowed | | 5 km/h |
| Drive speed - raised | | 1 km/h |
| Gradeability | | 45 % |
| Permissible leveling | | 5 ° |
| Wheels | | |
| Tires type | | Foam-filled |
| Standard tires | | 834 x 298 mm |
| Drive wheels (front / rear) | | 2 / 2 |
| Steering wheels (front / rear) | | 2 / 2 |
| Braking wheels (front / rear) | | 0 / 2 |
| Engine/Battery | | |
| Engine brand / model | | Kubota - D1105-E4B |
| Engine norm | | Interim Tier 4, Stage IIIA, Stage V |
| I.C. Engine power rating / Power | | 24.50 Hp / 18.50 kW |
| Miscellaneous | | |
| Ground Pressure | | 11.60 dan/cm2 |
| Hydraulic Pressure | | 340 bar |
| Hydraulic tank capacity | | 54 l |
| Fuel tank | | 52 l |
| Sound level at platform | | 105 dB |
| Noise to environment (LWA) | | < 105 dB |
| Daily consumption ** | | 4.08 l |

*Varies according to options and standards of the country to which the machine is delivered

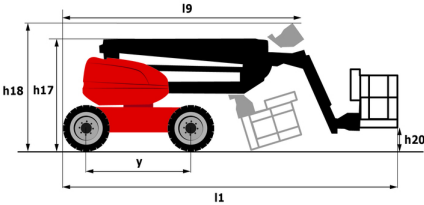
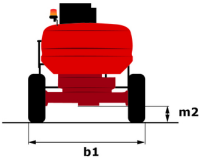
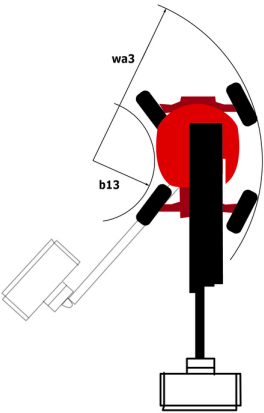
** According to "REDUCE cycle"

160 ATJ - Load chart

Load Chart for MEWP Metric



160 ATJ - Dimensional drawing



Equipment

| Standard |
|---|
| 220V predisposition in the platform |
| 4 simultaneous movements |
| 4 wheel drive |
| 4 wheel steer with crab mode |
| Audible alarm and illuminated indicator lamp (leveling, overload, lowering) |
| Backup electrical pump |
| Basket 1,800 mm |
| CAN bus technology |
| Dead man pedal |
| Differential locking on rear axle |
| Easy Manager |
| Emergency stop button in platform and on frame |
| Front axle with limited slip |
| Fuel gauge with low level indicator |
| Fully galvanized basket with demountable floor |
| Hom in the platform |
| Hour meter |
| Leveling unlocking |
| Load sensing pump |
| Oscillating front axle |
| Steer and rotate |
| Stop & Go system |

| Optional |
|--|
| 18" tyres |
| Battery charger |
| Battery cut-off |
| Biodegradable oil |
| Catalytic cleaner |
| Coded anti-start |
| Cold weather protection oil |
| Continuous turret rotation |
| Fully galvanized basket 1800mm / 5'11" with lateral door |
| Galvanized basket 2,100 mm |
| Highly capacity battery |
| Lockable fuel cap |
| On-board generator (3,5 or 5 kW) |
| Personalized paintwork |
| Safety hamess |
| Secondary Protection System (SPS) |
| Spark arrester |
| Water heater |
| Water predisposition |
| Working headlight in platform |



Head Office

B.P. 249 - 430 rue de l'Aubinière

44150 Ancenis Cedex - France

Tel: +33 (0)2 40 09 10 11 - Fax: +33 (0)2 40 09 10 97

www.manitou.com



This publication provides a description of the configuration versions and options for Manitou products, which may differ for equipment. The equipment presented in this brochure may be part of a series, as an option, or it may not be available, depending on the versions. Manitou reserves the right, at any time and without notice, to amend the specifications described and represented. The specifications provided do not bind the manufacturer. For more details, please contact your Manitou agent. This is not a contractually binding document. The presentation of the products is not contractually binding. List of specifications non-exhaustive. The logos as well as the visual identity of the company are owned by Manitou and cannot be used without authorisation. All rights reserved. The photos and diagrams contained in this brochure are only provided for consultation and information purposes.

MANITOU BF SA - Limited company with board of directors - Share capital: 39,668,399 euros - 857 802 508 RCS Nantes