

Fiche technique :

# 220 TJ-XP



 **MANITOU**  
HANDLING YOUR WORLD

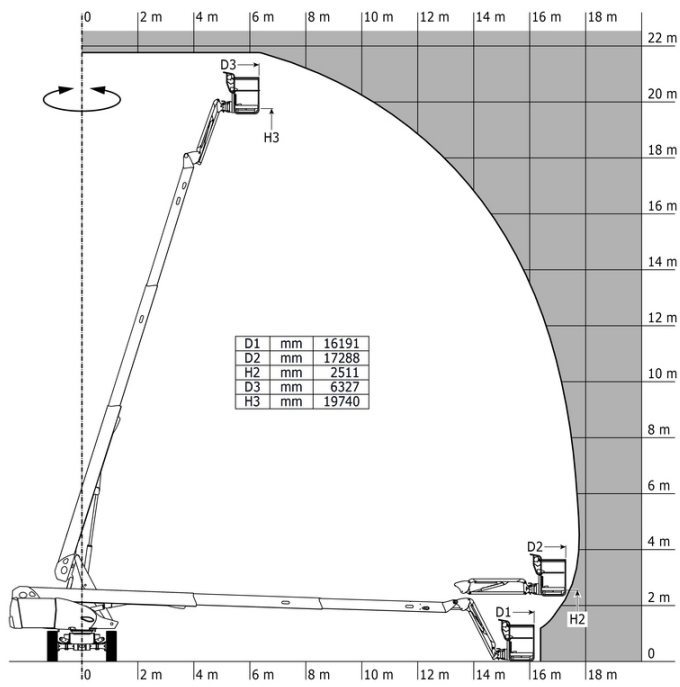
| Capacités                               |         | Métrique   |
|---|---------|--|
| Working height                          | h21     | 21.74 m  |
| Platform height                         | h7      | 19.74 m  |
| Max. outreach                           |         | 17.78 m  |
| Pendular arm rotation (top / bottom)    |         | +70 ° / -63 °  |
| Platform capacity                       | Q       | 350 kg   |
| Turret rotation                         |         | 360 °  |
| Platform rotation (right / left)        |         | 90 ° / 90 °  |
| Number of people (indoor / outdoor)     |         | 3 / 3  |
| Weight and dimensions                   |         |  |
| Platform weight*                        |         | 13600 kg   |
| Platform dimensions (length x width)    | lp / ep | 2.30 m x 0.90 m  |
| Floor height (access)                   | h20     | 0.39 m   |
| Overall length                          | l1      | 10.05 m  |
| Overall width                           | b1      | 2.48 m   |
| Overall height                          | h17     | 2.52 m   |
| Overall length (stowed)                 | l9      | 7.35 m   |
| Overall height (stowed)                 | h18 *** | 3.03 m   |
| Jib length                              | l13     | 2 m  |
| Counterweight Oversize / Reach          |         | 1.34 m   |
| External turning radius                 | Wa3     | 4.40 m   |
| Ground clearance at centre of wheelbase | m2      | 0.44 m   |
| Wheelbase                               | y       | 2.80 m   |
| Performances                            |         |  |
| Drive speed - stowed                    |         | 5.40 km/h  |
| Drive speed - raised                    |         | 1 km/h   |
| Gradeability                            |         | 40 %   |
| Permissible leveling                    |         | 4 °  |
| Wheels                                  |         |  |
| Tires type                              |         | Solid Tires Cured-On   |
| Drive wheels (front / rear)             |         | 2 / 2  |
| Steering wheels (front / rear)          |         | 2 / 2  |
| Braking wheels (front / rear)           |         | 2 / 2  |
| Engine/Battery                          |         |  |
| Engine brand / model                    |         | Kubota - V1505.E3B   |
| Engine norm                             |         | Stage IIIA   |
| I.C. Engine power rating / Power        |         | 35 Hp / 26.20 kW   |
| Miscellaneous                           |         |  |
| Ground Pressure                         |         | 18.30 dan/cm2  |
| Hydraulic Pressure                      |         | 400 bar  |
| Hydraulic tank capacity                 |         | 94 l   |
| Fuel tank                               |         | 72 l   |
| Noise to environment (LwA)              |         | < 107 dB   |
| Vibration on hands/arms                 |         | < 0.50 m/s <sup>2</sup>  |
| Daily consumption **                    |         | 7.98 l   |
| Standards compliance                    |         |  |
| This machine is in compliance with:     |         | European directives: 2006/42/EC- Machinery (revised EN280:2013) - 2004/108/EC (EMC) - 2006/95/EC (Low voltage) |

\*Varies according to options and standards of the country to which the machine is delivered

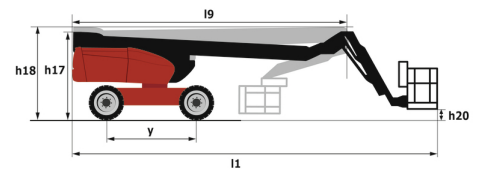
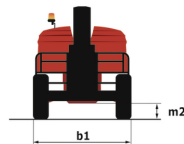
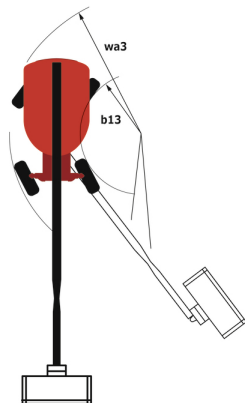
\*\* According to "REDUCE cycle"

## 220 TJ-XP - Abaques

Load Chart for MEWP Metric



## 220 TJ-XP - Schémas d'encombrement



# Équipements

## Standard

230V Predisposition  
4 simultaneous movements  
4 wheel steer with crab mode  
Audible alarm and illuminated indicator lamp (leveling, overload, lowering)  
Backup electrical pump  
Continuous turret rotation  
Differential locking on rear axle  
Electronic platform compensation  
Emergency stop button in platform and on frame  
Engine mounted on sliding platform  
Fuel gauge with low level indicator  
Integrated diagnostic assistance  
Oscillating front axle  
Painted basket for heavy loads 2,300 mm (7ft 7 in.)  
Protective cover for control panel  
Rear axle with limited slip differential  
Remote control for transport

## Optionnel

110 or 230V plug with differential circuit breaker  
Additional storage boxes  
Basket 1,800 mm  
Battery cut-off  
Biodegradable oil  
Catalytic cleaner  
Cold weather protection oil  
Key lock on fuel tank  
Key lock on turret cover  
On-board generator (3,5 or 5 kW)  
Panel support kit  
SMS : Safe Man System  
Safety harness  
Screen protection on the lower box control  
Spark arrester  
Special color paints  
Tube support kit  
Water predisposition  
Working light



**Siège Social**

B.P. 249 - 430 rue de l'Aubinière

44150 Ancenis Cedex - France

Tel: +33 (0)2 40 09 10 11 - Fax: +33 (0)2 40 09 10 97

[www.manitou.com](http://www.manitou.com)



Cette publication présente le descriptif des versions et possibilités de configuration des produits Manitou qui peuvent différer en équipement. Les équipements présentés dans cette brochure peuvent être de série, en option, ou non disponibles suivant les versions. Manitou se réserve le droit, à tout moment et sans préavis, de modifier les spécifications décrites et représentées. Les spécifications portées n'engagent pas le constructeur. Pour plus de détails, contactez votre concessionnaire Manitou. Document non contractuel. Présentation des produits non contractuelle. Liste des spécifications non exhaustive. Les logos ainsi que l'identité visuelle de l'entreprise sont la propriété de Manitou et ne peuvent être utilisés sans autorisation. Tous droits réservés. Les photos et schémas contenus dans la présente brochure ne sont fournis qu'à des fins de consultation et à titre indicatif.

Manitou BF SA - Société anonyme à conseil d'administration - Capital social : 39 668 399 euros - 857 802 508 RCS Nantes