

Technical sheet :

ATJ 60 E

OXYGEN



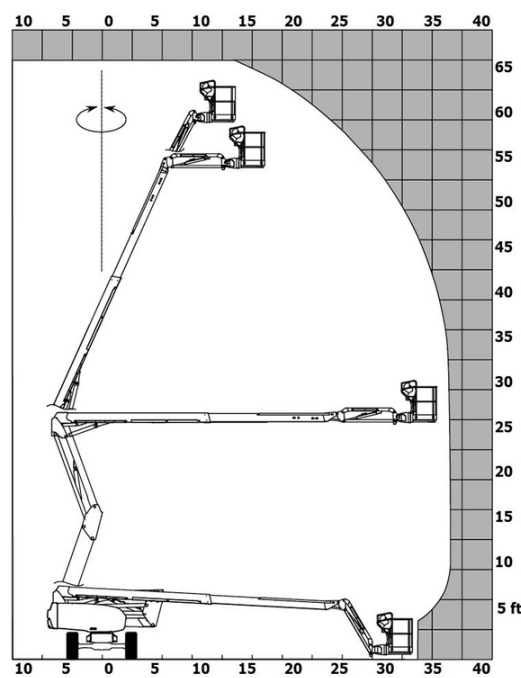
 **MANITOU**
HANDLING YOUR WORLD

Capacities		Imperial
Working height	h21	65 ft 7 in
Platform height	h7	59 ft 1 in
Maximum outreach		38 ft
Overhang		25 ft 11 in
Pendular arm rotation (top / bottom)		+65 ° / -60 °
Platform capacity	Q	500 lb
Turret rotation		350 °
Platform rotation (right / left)		90 ° / 90 °
Number of people (indoor / outdoor)		2 / 2
Weight and dimensions		
Platform weight*		15653 lb
Platform dimensions (length x width)	lp / ep	5 ft 11 in x 2 ft 6 in
Floor height (access)	h20	1 ft 4 in
Overall length	l1	27 ft 4 in
Overall width	b1	7 ft 7 in
Overall height	h17	8 ft 1 in
Overall length (stowed)	l9	19 ft 11 in
Overall height (stowed)	h18 ***	8 ft 8 in
Counterweight offset (turret at 90°)	a7	2 ft 1 in
External turning radius	Wa3	17 ft 5 in
Ground clearance at centre of wheelbase	m2	1 ft 3 in
Wheelbase	y	7 ft 7 in
Performances		
Drive speed - stowed		3 mph
Drive speed - raised		0.40 mph
Gradeability		40 %
Permissible leveling		4 °
Wheels		
Tires type		Solid non-marking tires
Standard tires		36 x 15 D610 / 910 x 370 mm
Drive wheels (front / rear)		2 / 2
Steering wheels (front / rear)		2 / 0
Braking wheels (front / rear)		0 / 2
Engine/Battery		
Battery voltage		48 V
Number of batteries / Battery nominal voltage / Battery capacity		1 / 48 V / 480 Ah
Battery energy		22 kW/h
On-board charger (V / A)		48 V / 60 A
Miscellaneous		
Number of cycles with STD Battery (HIRD)		41
Ground Pressure		160 PSI
Hydraulic Pressure		3481 PSI
Hydraulic tank capacity		6 US gal
Sound pressure level (platform work station) (LpA)		70 dB
Vibration on hands/arms		< 2.50 m/s²
Standards compliance		
This machine is in compliance with:		ANSI A92.20-2018 CSA B354.6 ICES-002-Issue 6 Standard Canadian EMC

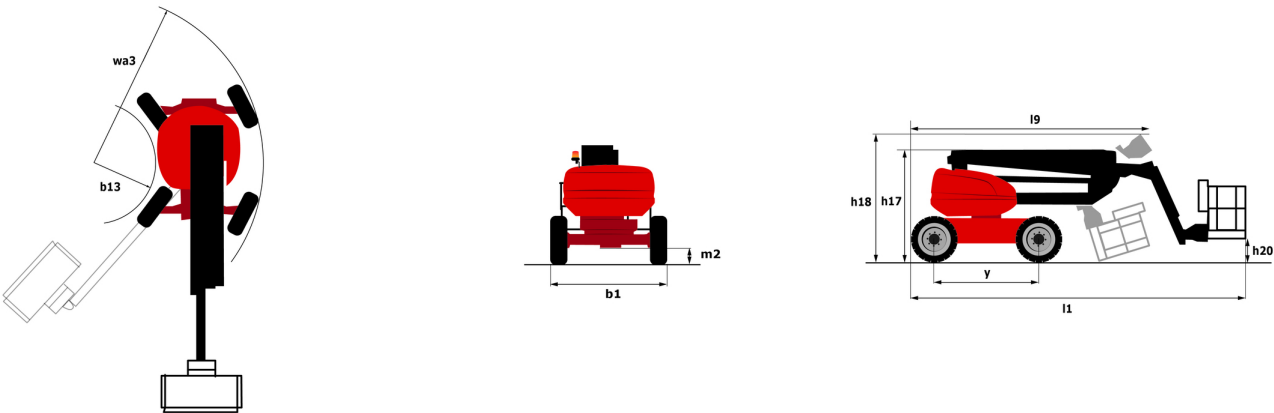
*Varies according to options and standards of the country to which the machine is delivered

ATJ 60 e - Load chart

Load Chart for MEWP (Imperial)



ATJ 60 e - Dimensional drawing



Equipment

Standard
110 V American plug with differential circuit breaker
4 simultaneous movements
4 wheel drive
Audible alarm and illuminated indicator lamp (leveling, overload, lowering)
Backup electrical pump
Biodegradable oil
CAN bus technology
Dead man pedal
Differential locking on rear axle
Drive safety orientation system
Easy Manager
Emergency stop button in platform and on frame
Flat Led Rotating Beacon
Fully galvanized basket 1800mm / 5'11" with lateral door
Integrated diagnostic assistance
Large color screen on turret
Lead acid batteries
Lift and drive
Multi-voltage integrated charger
Non-marking tyres
Oscillating front axle
Protective cover for control panel
Reserve mode
Screen information in the basket
Secondary Protection System (SPS)
Simplified lift system
Steer and rotate
Tool box in platform
Travel possible at maximum height
Turret orientation information
Two electric motors of 8.5kW and 16kW

Optional
110 or 230V plug with differential circuit breaker
110v Canadian plug In basket with 3 differential circuit breaker
Biodegradable oil
Coded anti-start
Engine compartment with key lock
External pneumatic supply source
Fully galvanized basket 1500mm with lateral door
Galvanized basket 1,800 mm
Hydraulic oil heater
Secondary Protection System (SPS)
Water predisposition
Working headlight in platform



Head Office

B.P. 249 - 430 rue de l'Aubinière

44150 Ancenis Cedex - France

Tel: +33 (0)2 40 09 10 11 - Fax: +33 (0)2 40 09 10 97

www.manitou.com



This publication provides a description of the configuration versions and options for Manitou products, which may differ for equipment. The equipment presented in this brochure may be part of a series, as an option, or it may not be available, depending on the versions. Manitou reserves the right, at any time and without notice, to amend the specifications described and represented. The specifications provided do not bind the manufacturer. For more details, please contact your Manitou agent. This is not a contractually binding document. The presentation of the products is not contractually binding. List of specifications non-exhaustive. The logos as well as the visual identity of the company are owned by Manitou and cannot be used without authorisation. All rights reserved. The photos and diagrams contained in this brochure are only provided for consultation and information purposes.

MANITOU BF SA - Limited company with board of directors - Share capital: 39,668,399 euros - 857 802 508 RCS Nantes