

GCT 3-14

CONSTRUCTION TELEHANDLERS

GEHL®



KEY FEATURES

- ✓ Multi-Function Joystick on Floating Armrest
- ✓ Automatic Parking Brake
- ✓ Polycarbonate Roof Window, FOPS Level 1
- ✓ Universal Skid Steer Attachment Quick Attach
- ✓ Enhanced Fork Tilt
- ✓ Battery Cut-Off

KEY SPECIFICATIONS

- ✓ Maximum capacity 2,200 lbs.
- ✓ Standard Machine GVW 6,063 lbs.
- ✓ 3 Steering Modes - 2-Wheel, 4-Wheel, Crab
- ✓ Super Compact: W 4' 11" | H 6' 4" | L 11' 5"
- ✓ 35hp Yanmar Tier IV Final Engine
- ✓ Maximum Lift of 14' 1"

		METRIC	IMPERIAL
CAPACITIES	Max. capacity	998 kg	2200 lb
	Max. lifting height	4.30 m	14 ft 1 in
	Maximum outreach	2.62 m	8 ft 7 in
	Reach at max. height	1 m	3 ft 3 in
	Breakout force with bucket	1880 daN	
WEIGHT AND DIMENSIONS	Shipping mass (min. / max.)	2550 kg / 2750 kg	5622 lb / 6063 lb
	Ground clearance	0.29 m	11 in
	Wheelbase	2.13 m	7 ft
	Overall length to carriage (with hitch)	3.47 m	11 ft 5 in
	Overall length to carriage (without hitch)	3.47 m	11 ft 5 in
	Front overhang	0.77 m	2 ft 6 in
	Overall width	1.49 m	4 ft 11 in
	Overall cab width	0.66 m	2 ft 2 in
	Overall height	1.92 m	6 ft 4 in
	Tilt-down angle	116 °	
	Tilt-up angle	23 °	
PERFORMANCES	External turning radius (over tyres)	2.62 m	8 ft 7 in
	Standard tires	CAMSO - MPT 552 - 10.0/75-15.3 124A8	
	Lifting	8.80 s	
	Lowering	7 s	
	Extension	6.40 s	
	Retraction	4.30 s	
	Crowd	3.40 s	
ENGINE	Dump	2.60 s	
	Engine brand	Yanmar	
	Engine nom	Stage V, Tier 4 final	
	Engine model	3TNV88C-DMU	
	Number of cylinders - Capacity of cylinders	3 - 1642 cm³	3 - 100 in³
	Engine power (Hp / kW)	35.10 Hp / 26.20 kW	
	Max. torque / Engine rotation	105 Nm @1950 rpm	77 ft/lbs @1950 rpm
	Drawbar pull (Laden)	2000 daN	
	Reversible fan	Option	
	Engine cooling system	3 radiators (water + hydraulic oil + fuel)	
TRANSMISSION	HVO validated (according to EN 15940 standard)	Yes	
	Transmission type	Hydrostatic	
	Number of gears (forward / reverse)	2 / 2	
	Max. travel speed (may vary according to applicable regulations)	25 km/h	16 mph
	Differential lock	Limited slip differential on front and rear axles	
	Parking brake	Automatic negative parking brake	
HYDRAULICS	Service brake	Hydraulic servo brake	
	Hydraulic pump type	Gear pump	
	Hydraulic flow - Pressure	48 l/min - 235 bar	13 US gpm - 3408 PSI
TANK CAPACITIES	Flow sharing distributor	Standard	
	Hydraulic tank capacity	39 l	10 US gal
NOISE AND VIBRATION	Fuel	35 l	9 US gal
	Noise at driving position (LpA) tested following NF EN 12053 norm	76 dB	
	Noise to environment (LwA)	104 dB	
MISCELLANEOUS	Vibration on hands/arms	2.50 m/s²	8 ft/s²
	Cab certification	ROPS - FOPS cab (level 1)	
	Controls	Joystick	

GEHL Company reminds users to read and understand the operator's manual before operating any equipment. Also, make sure all safety devices and shields are in place and functioning properly. GEHL reserves the right to add improvements or make changes in specifications at any time without notice or obligation.

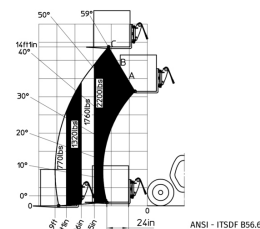


STANDARD FEATURES

- Front and rear LED work lights on cab (x4 : 2 front + 2 rear)
- Cabin Rops and fops level I
- 12Volt Power Port
- Crab mode
- 4 wheel drive
- Automatic parking brake
- Harmony screen - 5 in.
- Battery cut-off
- Document holder
- Connected machine
- USB Plug
- Adjustable and telescopic steering column

OPTIONAL FEATURES

- Air Conditioning
- Self-cleaning pre-filter
- Stop & Start
- Attachment hydraulic line
- Continuous flow hydraulics
- LED work lights - On the top of the boom (fixed part) (x2)
- Auto reversing fan
- Attachment hydraulic locking
- Air suspension fabric seat - GRAMMER



One Gehl Way, West Bend, WI 53095
Phone: (262) 334-9461



GEHL COMPACT EQUIPMENT