

Technical sheet :

MLA-T 533-145 V+ - ST5

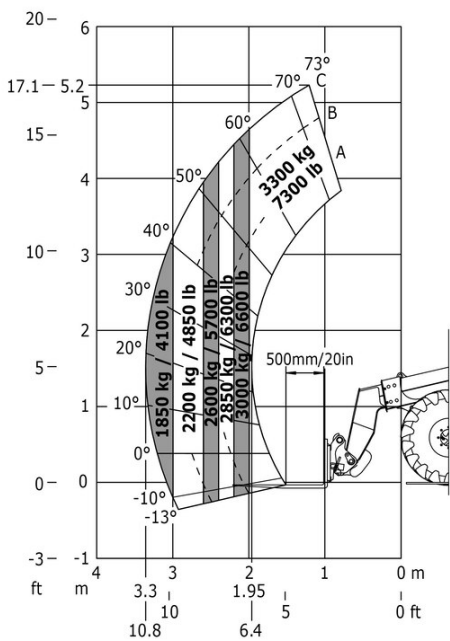


 **MANITOU**
HANDLING YOUR WORLD

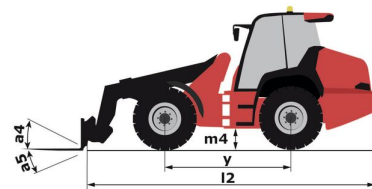
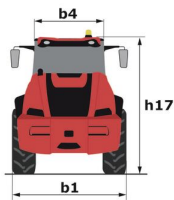
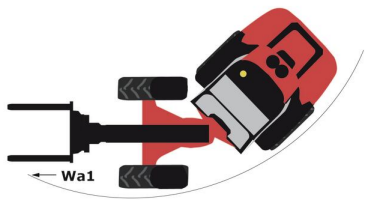
| Capacities | | Metric |
|---|-----|---|
| Static tipping load with forks (straight) | | 4978 kg |
| Static tipping load with forks (full turn) | | 4147 kg |
| Max. payload with forks as per EN 474-3 (80%) | | 3300 kg |
| Max. lifting height (below forks) | h3 | 5.20 m |
| Max. outreach | | 3.30 m |
| Reach at max. height | | 1.20 m |
| Breakout force with bucket | | 6730 daN |
| Weight and dimensions | | |
| Unladen weight (with forks) with 2-post canopy | | 2.29 kg |
| Unladen weight (with forks) with 4-post canopy | | 8430 kg |
| Unladen weight (with forks) | | 8430 kg |
| Overall length to carriage (with hitch) | l11 | 5.72 m |
| Wheelbase | y | 2.50 m |
| Overall height with cab | h17 | 2.70 m |
| Tilt-up angle | a4 | 9 ° |
| Tilt-down angle | a5 | 156 ° |
| External turning radius (over tyres) | Wa1 | 4.20 m |
| Articulation angle | a19 | 45 ° |
| Overall width less bucket | b1 | 2.29 m |
| Overall length - Less Bucket | l2 | 5.72 m |
| Standard tires | | Alliance - A580 - 460/70 R24 159A8 |
| Ground clearance | m4 | 0.39 m |
| Performances | | |
| Crowd | | 3.50 s |
| Dump | | 2.70 s |
| Engine | | |
| Engine brand | | Deutz |
| Engine model | | TCD_4.1_L4 |
| Engine norm | | Stage V |
| Number of cylinders / Capacity of cylinders | | 4 - 4038 cm³ |
| I.C. Engine power rating / Power | | 143 Hp / 105 kW |
| Max. torque / Engine rotation | | 550 Nm / 1600 rpm |
| Engine cooling system | | 3 radiators water + intercooler + hydraulic oil |
| Transmission | | |
| Transmission type | | M-Varioshift |
| Max. travel speed (may vary according to applicable regulations) | | 40 km/h |
| Differential lock | | Limited slip differential on front and rear axles |
| Parking brake | | Manual |
| Hydraulics | | |
| Hydraulic pump type | | Variable displacement pump |
| Hydraulic flow - Pressure | | 158 l/min / 270 bar |
| Tank capacities | | |
| Hydraulic oil | | 150 l |
| Fuel tank | | 150 l |
| Diesel Exhaust fluid (AdBlue® type) | | 10 l |
| Noise and vibration | | |
| Noise at driving position (LpA) tested following NF EN 12053 norm | | 72 dB |
| Noise to environment (LWA) | | 107 dB |
| Vibration to whole hand/arm | | < 2.50 m/s² |
| Miscellaneous | | |
| Safety cab homologation | | ROPS - FOPS level 2 cab |

MLA-T 533-145 V+ - ST5 - Load chart

Machine on tyres with forks - Load chart compliant with EN 474-3 (80%) Metric



MLA-T 533-145 V+ - ST5 - Dimensional drawing





Head Office

B.P. 249 - 430 rue de l'Aubinière

44150 Ancenis Cedex - France

Tel: +33 (0)2 40 09 10 11 - Fax: +33 (0)2 40 09 10 97

www.manitou.com



This publication provides a description of the configuration versions and options for Manitou products, which may differ for equipment. The equipment presented in this brochure may be part of a series, as an option, or it may not be available, depending on the versions. Manitou reserves the right, at any time and without notice, to amend the specifications described and represented. The specifications provided do not bind the manufacturer. For more details, please contact your Manitou agent. This is not a contractually binding document. The presentation of the products is not contractually binding. List of specifications non-exhaustive. The logos as well as the visual identity of the company are owned by Manitou and cannot be used without authorisation. All rights reserved. The photos and diagrams contained in this brochure are only provided for consultation and information purposes.

MANITOU BF SA - Limited company with board of directors - Share capital: 39,668,399 euros - 857 802 508 RCS Nantes