

Technical sheet :

MLT 841-145 PS+



 **MANITOU**
HANDLING YOUR WORLD

Capacities		Metric	Imperial
Max. capacity	Q	4100 kg	9039 lb
Max. lifting height	h3	7.60 m	24 ft 11 in
Maximum outreach		4.45 m	14 ft 7 in
Reach at max. height		0.90 m	2 ft 11 in
Breakout force with bucket		5268 daN	5268 daN
Weight and dimensions			
Unladen weight (with forks)		9160 kg	20194 lb
Ground clearance	m4	0.43 m	1 ft 5 in
Wheelbase	y	2.88 m	9 ft 5 in
Overall length to carriage (with hitch)	l11	5.40 m	17 ft 9 in
Overall length to carriage (without hitch)	l3	5.23 m	17 ft 2 in
Front overhang		1.50 m	4 ft 11 in
Overall width	b1	2.39 m	7 ft 10 in
Overall cab width	b4	0.99 m	3 ft 3 in
Overall height	h17	2.42 m	7 ft 11 in
Tilt-down angle	a5	135 °	135 °
Tilt-up angle	a4	12 °	12 °
External turning radius (over tyres)	Wa1	3.74 m	12 ft 3 in
Standard tires		Michelin - XMCL - 460/70 R24 159A8	Michelin - XMCL - 460/70 R24 159A8
Drive wheels (front / rear)		2 / 2	2 / 2
Steering mode		Manicrab, 2 wheel steer, 4 wheel steer, Crab mode	Manicrab, 2 wheel steer, 4 wheel steer, Crab mode
Performances			
Lifting		6.40 s	6.40 s
Lowering		4.60 s	4.60 s
Extension		6.10 s	6.10 s
Retraction		5.20 s	5.20 s
Crowd		3 s	3 s
Dump		2.20 s	2.20 s
Engine			
Engine brand		Yanmar	Yanmar
Engine nom		Stage V / Tier 4 Final	Stage V / Tier 4 Final
Engine model		4TN107FHT-5SMUF	4TN107FHT-5SMUF
Number of cylinders - Capacity of cylinders		4 - 4567 cm ³	4 - 279 in ³
Engine power (Hp / kW)		141 Hp / 105 kW	141 Hp / 105 kW
Max. torque / Engine rotation		602 Nm @1500 rpm	444 ft/lbs @1500 rpm
Drawbar pull (Laden)		8727 daN	8727 daN
Reversible fan		Standard	Standard
Engine cooling system		4 radiators (water + intercooler + hydraulic oil + transmission oil)	4 radiators (water + intercooler + hydraulic oil + transmission oil)
Transmission			
Transmission type		Torque converter with powershift gearbox	Torque converter with powershift gearbox
Gearbox		M-Shift	M-Shift
Number of gears (forward / reverse)		5 / 3	5 / 3
Max. travel speed (may vary according to applicable regulations)		40 km/h	25 mph
Differential lock		Limited slip differential on front and rear axles	Limited slip differential on front and rear axles
Parking brake		Automatic negative parking brake	Automatic negative parking brake
Service brake		Oil-immersed multi-discs braking on front & rear axles	Oil-immersed multi-discs braking on front & rear axles
Hydraulics			
Hydraulic pump type		Variable displacement pump	Variable displacement pump
Hydraulic flow - Pressure		200 l/min - 270 bar	53 US gpm - 3916 PSI
Flow sharing distributor		Standard	Standard
Tank capacities			
Hydraulic tank capacity		141 l	37 US gal
Fuel		142 l	38 US gal
Diesel Exhaust fluid (AdBlue® type)		21.50 l	6 US gal
Noise and vibration			
Noise at driving position (LpA) tested following NF EN 12053 norm		69 dB	69 dB
Noise to environment (LwA)		105 dB	105 dB
Vibration on hands/arms		< 2.50 m/s ²	< 8 ft/s ²
Miscellaneous			
Tractor homologation		Tractor homologation	Tractor homologation
Cab certification		Cabin ROPS - FOPS level 2	Cabin ROPS - FOPS level 2
Controls		JSM	JSM

Optional tires tab

ALLIANCE - A580 - 460/70 R24 159A8
ALLIANCE - A585 - 460/70 R24 159A8
MICHELIN - BIBLOAD - 460/70 R24 159A8
MICHELIN - BIBLOAD - 500/70 R24 164A8
MICHELIN - XMCL - 460/70 R24 159A8
MICHELIN - XMCL - 500/70 R24 164A8
TRELLEBORG - TH400 - 460/70 R24 159A8
TRELLEBORG - TH400 - 500/70 R24 164A8
TRELLEBORG - TH500 - 460/70 R24 159A8
VREDESTEIN - ENDURION - 460/70 R24 159A8
VREDESTEIN - ENDURION - 500/70 R24 164A8

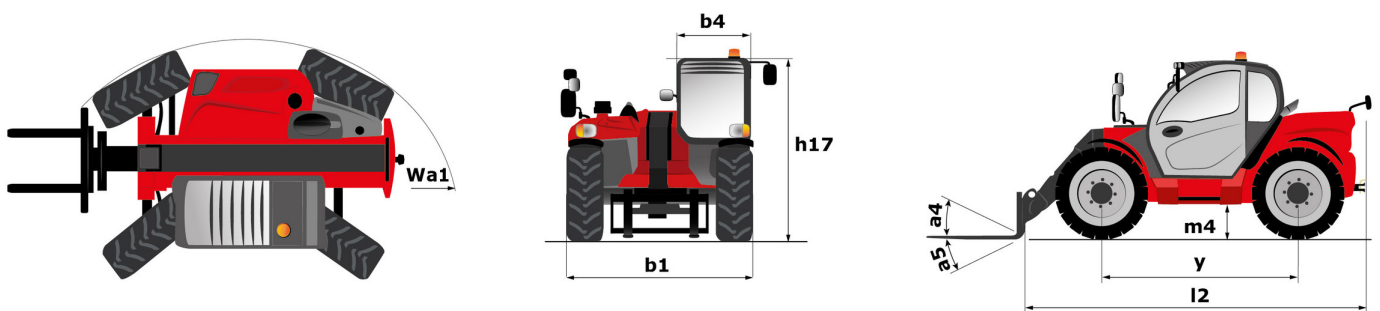
Overall height

8 ft 4 in (2.53 m)
8 ft 4 in (2.53 m)
8 ft 4 in (2.52 m)
8 ft 4 in (2.54 m)
8 ft 4 in (2.53 m)
8 ft 5 in (2.55 m)
8 ft 3 in (2.52 m)
8 ft 4 in (2.55 m)
8 ft 4 in (2.53 m)
8 ft 4 in (2.54 m)
8 ft 5 in (2.56 m)

Overall width

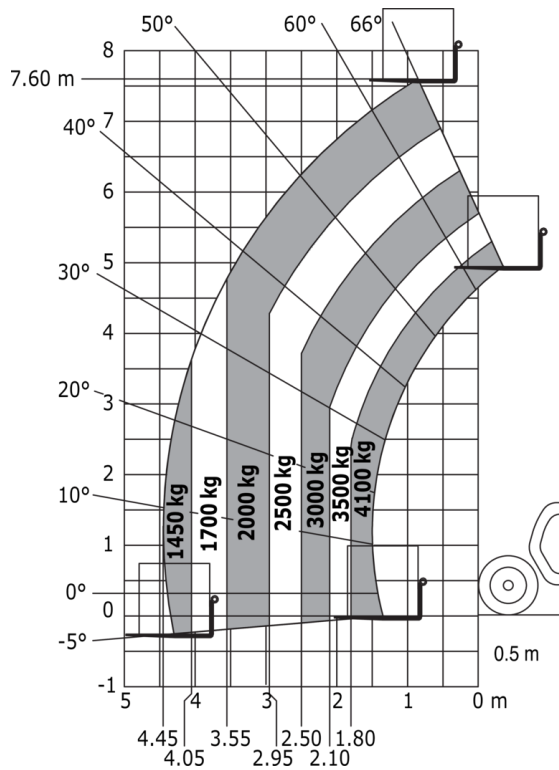
7 ft 10 in (2.38 m)
7 ft 10 in (2.39 m)
7 ft 10 in (2.39 m)
7 ft 11 in (2.42 m)
7 ft 10 in (2.39 m)
8 ft (2.43 m)
7 ft 10 in (2.39 m)
7 ft 11 in (2.42 m)
7 ft 11 in (2.41 m)
7 ft 11 in (2.40 m)
8 ft (2.44 m)

MLT 841-145 PS+ - Dimensional drawing

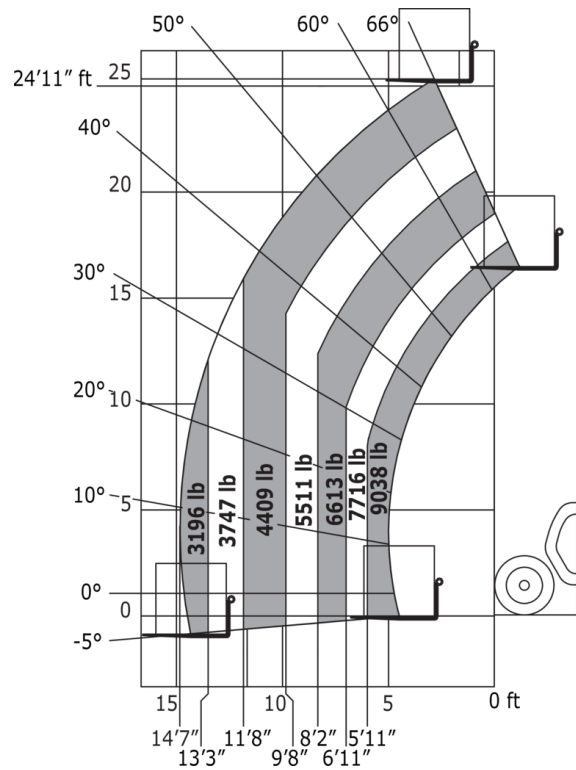


MLT 841-145 PS+ - Load chart

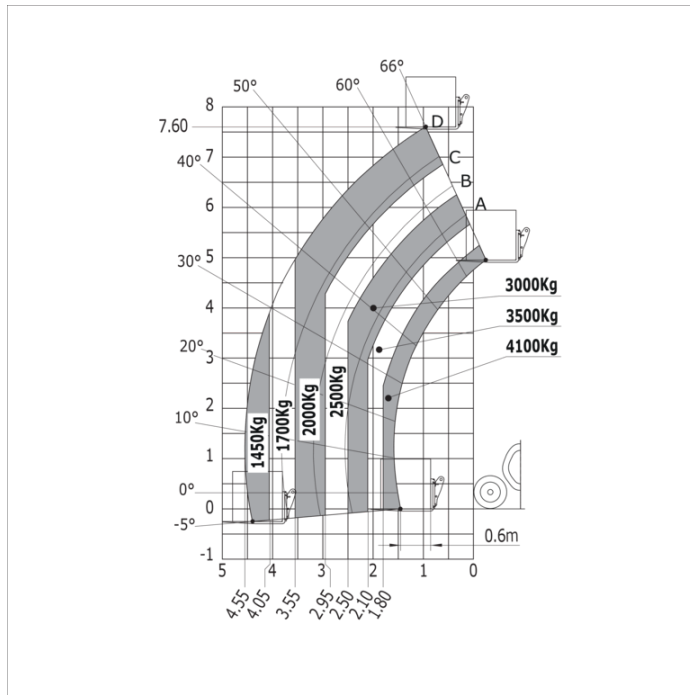
Machine on tires with forks Metric



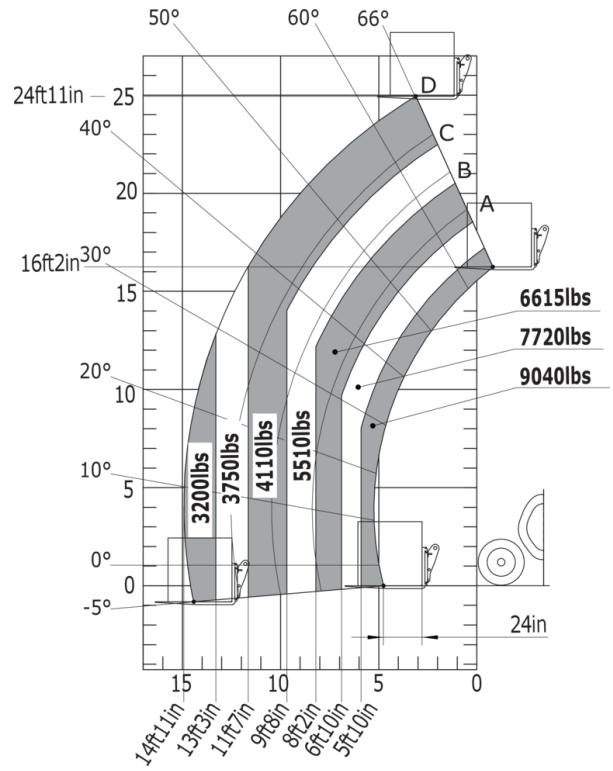
Machine on tires with forks Imperial



Machine on tires with forks LC 600 mm Metric



Machine on tires with forks LC 600 mm (Imperial)





Head Office

B.P. 249 - 430 rue de l'Aubinière
44150 Ancenis Cedex - France

Tel: +33 (0)2 40 09 10 11 - Fax: +33 (0)2 40 09 10 97

www.manitou.com



This publication provides a description of the configuration versions and options for Manitou products, which may differ for equipment. The equipment presented in this brochure may be part of a series, as an option, or it may not be available, depending on the versions. Manitou reserves the right, at any time and without notice, to amend the specifications described and represented. The specifications provided do not bind the manufacturer. For more details, please contact your Manitou agent. This is not a contractually binding document. The presentation of the products is not contractually binding. List of specifications non-exhaustive. The logos as well as the visual identity of the company are owned by Manitou and cannot be used without authorisation. All rights reserved. The photos and diagrams contained in this brochure are only provided for consultation and information purposes.

MANITOU BF SA - Limited company with board of directors - Share capital: 39,668,399 euros - 857 802 508 RCS Nantes